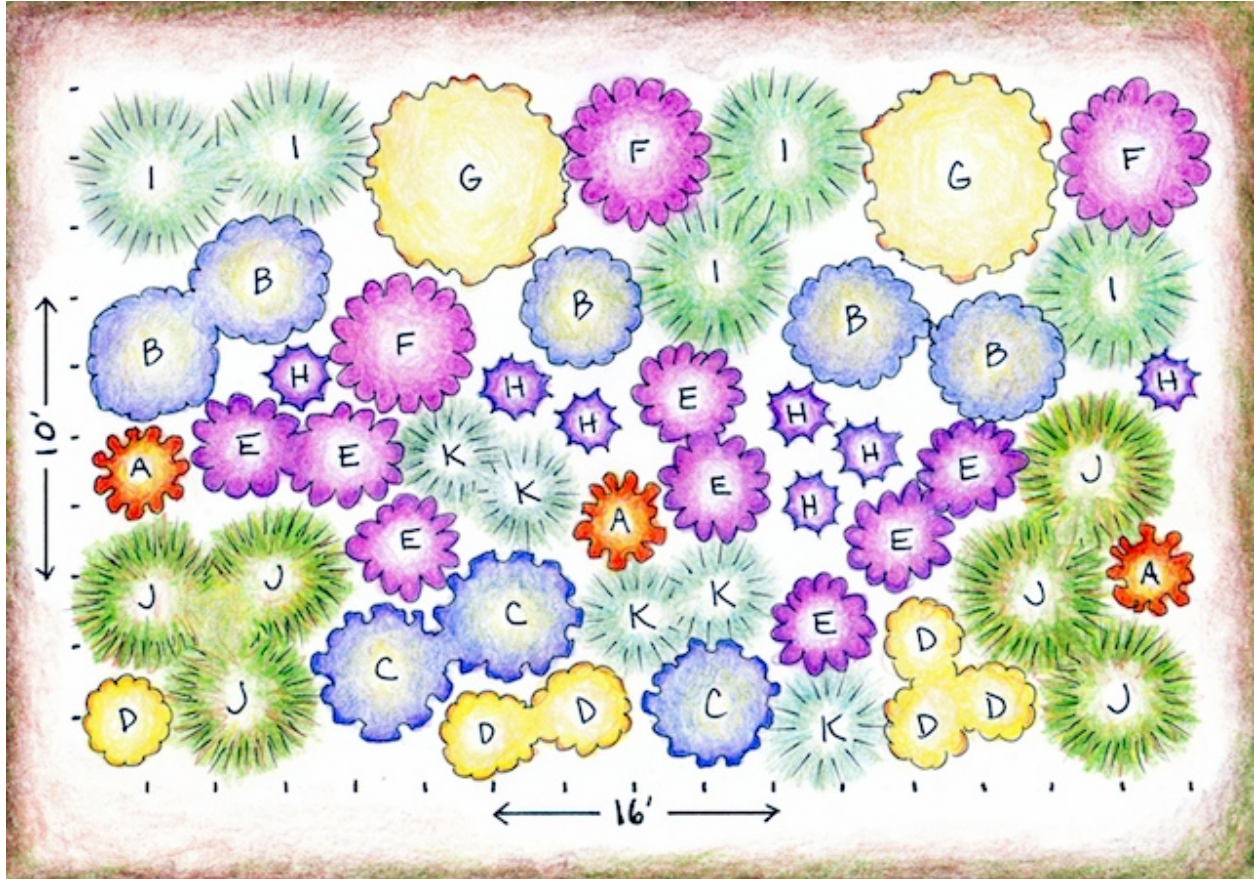


## Native Butterfly Garden Key



### Plant Legend

- A. *Asclepias tuberosa* (butterfly weed)
- B. *Aster laevis* 'Bluebird' (smooth aster)
- C. *Aster oblongifolius* 'October Skies' (aromatic aster)
- D. *Coreopsis* 'Moonbeam' (thread-leaved tickseed)
- E. *Echinacea purpurea* (purple coneflower)
- F. *Eupatorium purpureum* (sweet Joe-Pye weed)
- G. *Helianthus* 'Lemon Queen' (perennial sunflower)
- H. *Liatris ligulistylis* (Rocky Mountain blazing star)
- I. *Panicum virgatum* 'Prairie Sky' (switchgrass)
- J. *Schizachyrium scoparium* 'The Blues' (little bluestem)
- K. *Sporobolus heterolepis* (prairie dropseed)

From: Crossing the Native Border (a Late Season Flower Garden)

By: Marian & Jessie Keith

Learn2Grow®

<http://www.learn2grow.com/gardeningguides/wildflowersnatives/planting/MeetWildlifeAtBorder.aspx>